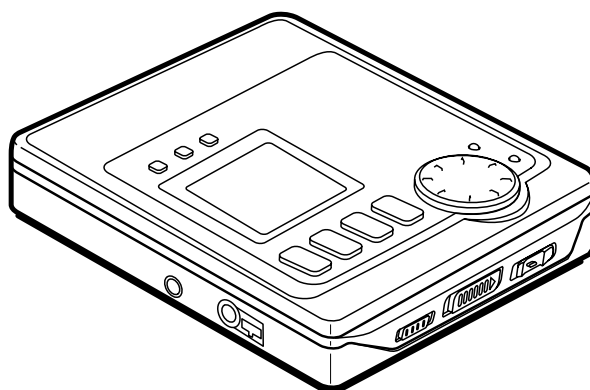


AM-C80
AM-F80
AM-F75

AU
AHC,AHK,AHR,
AEZ,AK

AK,AEZ



SERVICE MANUAL

MINIDISC RECORDER

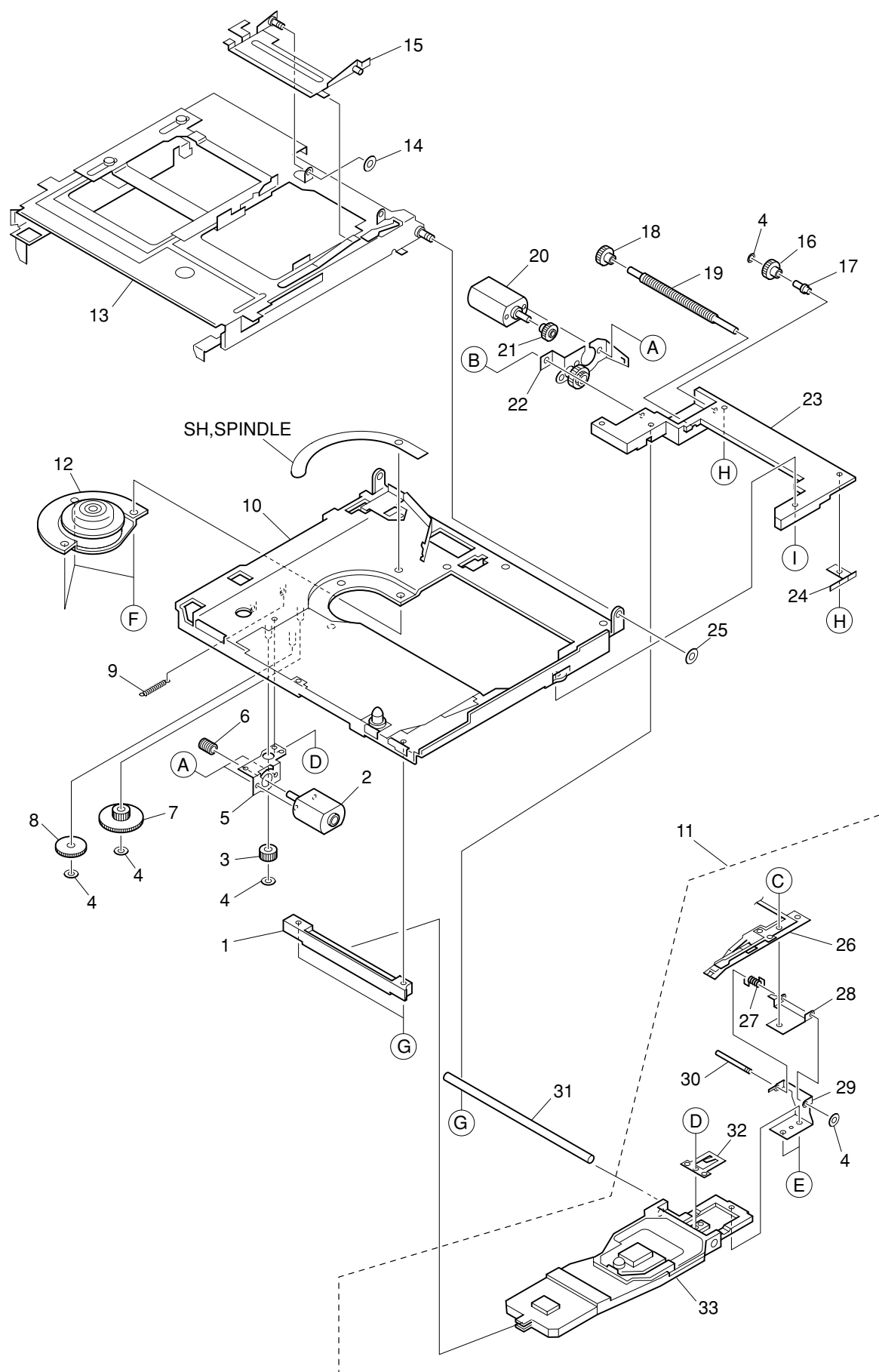
BASIC MD MECHANISM : ZZG-A R1

- This Supplement Service Manual is issued because of some changes in MD MECHANISM for the models
AM-C80 (AU) / F80 (AHC,AHK,AHR,AEZ,AK), (S/M Code No. 09-99B-419-2R2) and
AM-F75 (AK,AEZ), (S/M Code No. 09-99B-422-0R1).

aiwa
S/M Code No. 09-008-419-2S3

SUPPLEMENT
DATA

MECHANICAL EXPLODED VIEW 1 / 1



MECHANICAL PARTS LIST 1 / 1

REF.NO.	PART NO.	KANRI NO.	DESCRIPTION
1	8Z-ZGA-226-010		HLDR, P.U.GUIDE S
2	87-A91-016-010		MOT, LA8-388L
3	88-ZG2-228-010		GEAR, A OWH
4	87-067-569-010		POLY WASHER 0.83-2.5-0.25
5	88-ZG2-221-110		HLDR, MOT OWH
6	88-ZG2-227-010		GEAR, MOT OWH
7	88-ZG2-230-010		GEAR, C OWH
8	88-ZG2-229-010		GEAR, B OWH
9	88-ZG2-240-010		SPR-E, E-LOCK
10	8Z-ZGA-201-010		CHAS, ASSY, R
11	8Z-ZGA-271-010		PICKUP ASSY, ZZG-A R1
12	87-A91-014-010		MOT, SSM01C10A
13	8Z-ZGA-216-010		HLDR ASSY, CTRG
14	87-B10-152-010		W-P, 0.83-2.0-0.25 C
15	87-ZG1-262-010		LEVER ASSY, KICK OWH
16	8Z-ZGA-233-010		GEAR, B SL
17	8Z-ZGA-214-010		SHAFT, GEAR SL B
18	8Z-ZGA-234-010		GEAR, C SL
19	8Z-ZGA-236-010		SHAFT, LEAD
20	87-A91-493-010		MOT, PNN7GE08KD
21	8Z-ZGA-231-010		GEAR, MOT SL
22	8Z-ZGA-237-010		HLDR ASSY, MOT SL
23	8Z-ZGA-225-010		HLDR, P.U.GUIDE M
24	8Z-ZGA-241-010		SPR-P, LS GUIDE
25	87-078-123-010		PW, 1.1-2.5-0.3C
26	87-A91-467-010		HEAD, RF328-74 E
27	87-ZG1-244-010		SPR-T, OWH
28	88-ZG2-222-210		HLDR, PU
29	87-ZG1-242-110		HLDR, OWH
30	87-ZG1-243-010		SHAFT, OWH
31	8Z-ZGA-235-010		SHAFT, GUIDE M
32	88-ZG2-243-110		SPR-P, RACK
33	87-A90-956-010		PICKUP, KMS-280A
A	87-078-120-010		1V+1.2-1.5
B	88-ZG6-224-010		S-SCREW, VBT+1.4-3
C	87-231-501-310		PRECISION SCREW, Q+1.4-1.6
D	87-263-500-310		SCREW V+1.4-1.4
E	88-ZG2-255-010		S-SCREW, +1.7-1.6 AZIMUTH
F	87-067-393-010		SCREW +1.4-1.4
G	88-ZG2-256-010		S-SCREW, +1.4-3.5
H	87-067-511-010		SCREW, V+1.4-2 BK
I	88-ZG2-257-010		S-SCREW, +1.4-3.1



アイワ株式会社 〒110-8710 東京都台東区池之端1-2-11 ☎03(3827)3111 (代表)
AIWA CO.,LTD. 2-11, IKENOHATA 1-CHOME, TAITO-KU, TOKYO 110, JAPAN TEL:03 (3827) 3111

9301978 9620450

Printed in Singapore